

# DIGGIN'S FROM DAKOTA



MONTHLY PUBLICATION OF THE CENTRAL DAKOTA GEM & MINERAL SOCIETY

P.O. Box 2445, Bismarck, ND 58502

SERVING BISMARCK, MANDAN, AND SURROUNDING AREAS IN

NORTH DAKOTA

Gen Buresh, Editor  
DIGGIN'S FROM DAKOTA  
44 Captain Marsh Drive  
Mandan, ND 58554

**FIRST CLASS**

# DIGGIN' S FROM DAKOTA



Published by the CENTRAL DAKOTA GEM & MINERAL SOCIETY  
P.O. Box 2445, Bismarck, ND 58502

Member,

Rocky Mountain Federation of Mineralogical Societies  
and  
American Federation of Mineralogical Societies



- OBJECT: 1. To further the study of mineralogy and geology;  
2. To arrange field trips to collect minerals, gems, and fossils;  
3. To assist its members to improve in the art of cutting, polishing, and mounting gem material;  
4. To provide opportunities for the exchange, purchase, and exhibition of specimens and materials; and  
5. To share knowledge about gems, minerals, and activities of the Society with the general public. --Article II, CDGMS Constitution

MEETINGS: First Sunday of each month in the Hospitality Room, Capital Electric Building on Highway 83, north of Bismarck; 7:30 p.m. from April through October and 2:30 p.m., November - March. VISITORS ARE ALWAYS WELCOME.

ANNUAL DUES: Family - \$8.00; Individual Adult - \$6.00; Individual Junior - \$3.00

## OFFICERS AND COMMITTEE CHAIRMEN, 1981:

President	Mary Beth Osborn	310 - 12th Ave. NW	Mandan	663-1056
Vice President	William A. Buresh	44 Capt. Marsh Dr.	Mandan	663-5397
Secretary	Jane Lanz	600 - 13th St. NW	Mandan	663-8621
Treasurer	Ronald P. Wandler	336 Shady Lane	Bismarck	255-4947
	Program Chr. Earle Campbell	1134 N. 28th St.	Bismarck	255-3658
	Hospitality (Lunch) Chr. Leota Jensen	1400 - 5th Ave. NW	Mandan	663-8217
Clip stamp on reverse side )	Field Trip Chr. Merle Lanz	600 - 13th St. NW	Mandan	663-8621
	Annual Show Chr. Don Campbell	1119 Memorial, #17	Bismarck	258-1194

## OTHER APPOINTMENTS, 1981:

Bulletin Editor	Gen Buresh	44 Capt. Marsh Dr.	Mandan	663-5397
Early Class	Harold Brady	1401 Sunny Road	Mandan	663-3904
Federation Rep.	Bill Buresh	44 Capt. Marsh Dr.	Mandan	663-5397
Greeter	Mel Anderson	1521 LaForest Ave.	Bismarck	223-3558
Librarian-Hist.	Glenn Michaels	1700 N. 4th St.	Bismarck	258-8417
Parliamentarian	Al Hartl	1111 North 1st St.	Bismarck	258-0761
Publicity	Leota Jensen	1400 - 5th Ave. NW	Mandan	663-8217

All members are encouraged to submit articles/news for publication during the year. Advertisements from members will also be accepted for the bulletin. Material for the bulletin should reach the editor by the 10th of each month. Permission is given to reprint any article if proper credit is given.



# North Dakota's Annual GEM AND MINERAL SHOW

## Mandan Community Center

SEPT. 25 - 26, 1981



NEXT MEETING: Nov. 1, 1981, 2:30 p.m.  
(Discussion class, 1:30 p.m.)

PROGRAM: Silent Auction

Confucius say

"Nothing donated - Nothing gained  
Nothing spent - Nothing won"

LUNCH COMMITTEE: Edna Mausehund, Carol Hickie, and Sally O'Neill

\*\*\*\*\*

# PRESIDENT'S MESSAGE

October, 1981

Hello, everybody,

Just a short note to say "Thank you" to everyone who helped on both the Annual and Kirkwood Plaza shows. I have received compliments on the displays and on the friendliness club members have shown to the public. All the membership applications disappeared at Kirkwood and we had a lot of viewers. I think that this shows that there is quite a bit of interest in rocks and gems. We certainly can increase interest in gems and minerals by these shows.

The November meeting should be marked on your calendars. The Nominating Committee will be presenting nominations for the executive offices for next year. It's important to have a good idea of who's nominated because they (if elected) will be serving the membership. If you have any more nominations to suggest, let the committee know.

It's also silent auction time. Bring as many specimens as you can. The more variety, the more bids are made. Hope to see every member at this meeting participating.

Sincerely,

Mary Beth Osborn

\*\*\*\*\*

# CALENDAR OF EVENTS

- Nov. 1 Bismarck, ND--2:30 p.m., Regular Meeting, Central Dakota Gem & Mineral Society, Capital Electric Bldg., Highway 83-North of Bismarck
- Dec. 12-13 Minneapolis, MN--Anoka Co. Gem & Min. Club, 17th Annual Show, Apache Pl 1982
- Feb. 12-14 Tucson, AZ--Tucson Gem & Mineral Society's 28th Annual Show
- July 8-11--Houston, TX--American Federation Show
- Sept. 17-19 Denver, CO--Rocky Mountain Federation Show
- Sept. 24-25 MANDAN, ND--NORTH DAKOTA'S EIGHTH ANNUAL SHOW, Mandan Community Center. Sponsored by the Central Dakota Gem & Mineral Society. Show Chr.: Jane Lanz, 600 - 13th St. NW, Mandan, ND 58554

AT THE LAST MEETING--Oct. 4, 1981

Forty adults and ten juniors were reported present at the last meeting by greeter Mel Anderson. Twenty adults and three juniors were present for the pre-meeting session conducted by Harold Brady.

Edna Mausehund, secretary pro tem, read the minutes of the previous meeting. She also read the minutes of a recent Executive Board meeting which revealed that the Board had selected a Nominating Committee consisting of Betty Mautz, Nettie Nelson, and Rosa Thies, and a Show Committee for the 1982 show consisting of Jane Lanz, Don Campbell, and Duane Robey.

Show Chairman Don Campbell reported that although the attendance at the show was below that of other years, the show was still a great success. He stated that the exhibits were outstanding and thanked all the exhibitors for a great effort.

Show Treasurer Bob Randall stated that the financial report was not as yet complete, but that the proceeds from the silent auction were \$142.39. Of that amount, \$35.32 was earmarked for the club.

Larry Strand, Program Co-Chairman, suggested that Robert Houghton, one of the speakers at the show, be awarded an honorary membership for his contribution to the show. The club members agreed.

Melvin Anderson won the door prize, a necklace with a pendant donated by Norman Mautz.

Vernon Peterson won the junior door prize, a box of mineral specimens.

The program consisted of a slide presentation and narration by Larry Strand on the three different types of rocks. The slides showed many interesting examples of each type. Although elementary the program was interesting and a good review even for those best informed on the subject.

Serving lunch were Mary Beth Osborn (not Olson), Katherine (not Kathryn) Muggli, and Leota Jensen.

\* \* \* \* \*

NEW MEMBERS--WELCOME

The following four adults and five juniors attended the last meeting as members of the Society for the first time: Michael G. Brauer, SR 1-53, Baldwin; Winston and Char Rathbone with daughters Teresa and Jeri, 907-7th St. NW, Mandan; Wanda McGarvey with daughter Carin and son Curtis of 1119 Memorial Highway, Bismarck; Lee Allen Eckroth, son of Louie and Vi Eckroth of 210-13th Ave. NE, Mandan.

\* \* \* \* \*

IN MEMORIAM

We were saddened to learn at the Williston show that Mrs. Adolph Nelson, Williston, whose husband is a member of our club, passed away last July. Our belated sympathy is extended to the survivors.

\* \* \* \* \*

1981 SHOW CHAIRMAN'S FINAL REPORT

I wish to take this last opportunity to thank everyone who worked on the show this year.

Due to the excessive rain on Friday night and the persistent cold wind on Saturday, the attendance was down quite a bit from last year. The total number of people to see the show was around 1040, but approximately 150 of them were invited guests and club members, so the actual number of paying guests was 890. Some of those were school age (under 12) and some were senior citizens, so that we were about one hundred dollars short of what we had budgeted for on door receipts.

The people who did come managed to spend almost as much money as last year, so the dealers all managed to make some money. When the dealers don't make money they will not come back again and we will be out of a show.

One thing that was brought to my attention numerous times was the quality of the displays. Each year they become better and better and I guess that is one of the things the show is all about--improving our collections. The material was the best I've seen at the show, and

(cont.)

1981 SHOW CHAIRMAN'S FINAL REPORT, cont.

the manner in which it was displayed was something that everyone with a case can take real pride in. The most often aired remark from the judges was how hard it was trying to pick only one first place display. Originally they started with about ten cases and worked their way from there.

Regardless of the fact that we did not make as much money as we had hoped, we put on a beautiful show, made new friends, and signed up a few new club members, so we can all say the show was a success.

The 1982 Show Committee with Jane Lanz as chairperson has already started working on next year's show, so my closing wish would be that everyone get behind Jane, the way you worked with me, and let's make next year's show bigger and better than this year's.

Ex Show Chairman

Don Campbell

\* \* \* \* \*

SHOW AWARDS

Wilma Hilgemann from Leola, SD, was the winner of the "Best of Show" award in the adult division with her case of Amber, while Jim Nautz of Garrison, ND won the "Best of Show" plaque in the junior division with his case of Crystals and Concretions.

Exhibitors receiving ribbons were: Adult division--blue ribbon, Gen & Bill Buresh, Mandan, for "Artistry in Nature" exemplified in a variety of ways; tied for red ribbons were Bob Randall for Thumbnail Minerals and Melvin and Viola Anderson for a collection of slabbed rock specimens with a finished cabochon from each, all from Bismarck; white ribbon, Blossomae Campbell, Bismarck, for "Artistry in Nature" in white crystals.

Junior division--blue ribbon, Kim Nautz of Garrison for a case of fossils; red ribbon, Deanna Wandler of Bismarck for fossils from southwest North Dakota; and white ribbon, Lee Eckroth of Mandan for an assortment of minerals, fossils, and geodes.

Judges for the show were John and Ann Robb (John is with the Federal Water Conservation Board and Ann is a retired educator), and Florence and Ruth Stuckenbruck (mother and daughter, both local artists).

Criteria for judging were general interest, educational value, craftsmanship, and showmanship.

At the dealers' breakfast during the show Bob Randall was given a Distinguished Service Award for seven years of service as show treasurer and publicity director. The plaque was presented by the awards chairman, Blossomae Campbell.

\* \* \* \* \*

SHOW EXHIBITS--FINALE

I may be prejudiced, but I feel compelled to say that the exhibits alone this year made it a great show. All the other attractions were "frosting on the cake" and that is as it should be.

There were fifty-five displays--fifty-eight counting multiple cases--which is an all-time high. The quality also was great.

I wish to thank all the exhibitors--both members and guests--for a great effort, especially those who came from a distance and had both travel and lodging expenses.

I hope that you will all return again next year and encourage others to do likewise.

Bill Buresh

1981 Show Exhibits Chairman

VISIT YOUR LOCAL ROCK SHOP AND  
MUSEUM

CABS FOR SALE--  
Polished or Do Your Own

MUGGLI ROCK SHOP & MUSEUM  
701 Oak Ave. East  
Glen Ullin, ND 58631  
Telephone: 348-3897



OKTOBERFEST '81

Fourteen exhibits were displayed by Central Dakota Gem & Mineral Society members at the second annual Oktoberfest in Kirkwood Mall on Saturday, October 10. The showing took place from 9:00 a.m. to 6:00 p.m., with large crowds of people viewing the displays throughout the day--three deep at times, peering over each other's shoulders.

There were many comments of amazement at the beauty and craftsmanship displayed in the cases.

Members exhibiting were the Bob Randalls, Harold Brady's, Earle Campbells, Bill Bureshes, Ronald Wandlers, Duane Robeys, Melvin Andersons, Jack Harveys and Jeff, Don Campbell, Glenn Michaels, Mary Beth Osborn, and Lee Allen Eckroth. One exhibit was also provided by the Paleontological Society.

Observed among the many craft displays at the Civic Center were Clara and Ewald Muggli, who were selling their wares in their attractively arranged booth.

\* \* \* \* \*

EDITOR'S OBSERVATIONS

Wilma Hilgemann is quoted in the "Lakota Pebbles," the Aberdeen Club Bulletin, as saying that programs at our show were excellent.

I agree. I especially liked the printed schedules for the special programs; the professional signs and posters that identified the various activities and dressed up the arena; the program on "Fluorescents" by Wil DeGraff with the many examples shown, and the one on "The Geology of the Williston Basin" by Robert Houghton and the interesting and educational maps of the various eras; and the demonstrations--lost wax casting techniques and the making of cabochons. I'm sorry I missed the slide programs, as viewers' comments were most positive.

Last but not least I wish to extend commendations to the big chief of the show--Don Campbell, 1981 Show Chairman. I'm sure the other members join me in saying, "Thanks, Don!"

G.B.

THIS-N-THAT

Bob and Sue Randall attended the Aberdeen show on Sept. 19 and 20, where Bob displayed his copper mineral collection. Wilma Hilgemann had three cases on display there.

+ + +

Gen and Bill Buresh displayed their feldspar collection at the Williston show on Sept. 19-20. They reported at least ten other Central Dakota Gem and Mineral Soc. members present.

+ + +

News of weddings involving two club members has recently been received. Best wishes to Mr. & Mrs. Ralph Lindvig and to Mr. & Mrs. Henry Solberg.

+ + +

Jane Lanz reports that she is recovering from her recent surgery and is able to get out for short walks. (Getting practiced up for field trips next year, I hope!)

\* \* \* \* \*

MOUNT ST. HELEN'S ASH GEMSTONE

Displayed in one of Jack Harvey's cases was a beautiful green gemstone produced by the fusion of ash from the big eruption last year of Mt. St. Helen's. Some of you may have wondered what made it green.

Perhaps you can figure it out from this analysis of the ash from the May 17, 1980 eruption. Approximate percentages are: Silicon--43; Iron--24; Calcium--21; Potassium--7.2; Titanium--1.5; Strontium--1.1; Sulfur--.48; Manganese--.43; Zirconium--.43; Chromium--.21; Chlorine--.18; Molybdenum--.15; Zinc--.072; Rubidium--.057; Copper--.055; Yttrium--.05; Barium--.036; Gallium--.013; Arsenic--.007; Nickel--.0052.

The above percentages will vary in distance from the volcano, with heavier material having fallen closer to the mountain.

The percentages are from TEK Rock Club News of Beaverton, OR, via The Geo-Logic

EXHIBITORS -- 1981 SHOWExhibitors with more than one display:

Bob Randall, Bismarck, ND--  
 Fluorescent Materials  
 Thumbnail Minerals  
 Copper-Bearing Minerals

James Massa family, Custer, SD--  
 Fairburn Agates  
 Dryhead Agates

Broste Rock Museum, Farshall, ND--  
 Barb Martens, Mgr.  
 Minerals, Spheres, Lapidary Products,  
 and Photos of Museum Displays  
 ( 3 cases)

Blossomae Campbell, Bismarck, ND--  
 "Artistry in Nature" in White Crystals  
 Different Phases of a Fascinating Hobby  
 Portraying "Artistry in Nature"

Wilma Hilgemann--Leola, SD--  
 Amber Specimens & Products  
 Calcite Minerals  
 Shark Jaws & Teeth

Valborg Fisher, Mandan, ND--  
 Arrowheads & Other Indian Artifacts  
 (4 cases)

Jack & Jeff Harvey, Bismarck, ND--  
 Pewter Figurines  
 Phases of Lost Wax Casting Process  
 & Products

Julius & Rosa Thies, Menoken, ND--  
 Polished Brazilian Agate Slabs  
 Variety of Species of Petrified Wood

Glenn Michaels, Bismarck, ND--  
 Geodes

Glenn Michaels/Ronald Wandler, Bismarck--  
 Seven Dwarfs in a Mine Scene

Ronald Wandler, Bismarck, ND--  
 Different Stages of Sphere-Making

Bill & Gen Buresh, Mandan, ND--  
 Ginkgo Leaf Fossils  
 Feldspar Minerals  
 Small Fossils, from Earliest to  
 Recent Eras  
 "Artistry in Nature" Exemplified in a  
 Variety of Ways

Exhibitors with one display:

Ronald Gehringer, Fargo, ND--  
 Pyrite and Associated Minerals

Exhibitors with one display (cont.):

Harold and Emma Brady, Mandan, ND--  
 Geodes

Wil DeGraff, Fargo, ND--  
 Assortment of Rare & Attractive Crystals

Mel & Viola Anderson, Bismarck, ND--  
 Slabbed Rock Specimens with a Matching  
 Cabochon for Each

Ennis Rock Shop, Ennis, MT--  
 Friday Ranch Agates

Don Campbell, Bismarck, ND--  
 Potpourri of Butte

Rolene Rock Shop, Wabasso, MN--  
 Assorted Jewelry/Lapidary Products

Rev. Walter Schott, Mandan, ND--  
 Assorted Minerals/Lapidary Products

Teton Gems, Boise, Idaho--  
 Spencer Opal--Rough and Finished

Louise's Gem & Jewelry Shop, Coon Rapids,  
 Minnesota Silkstone Specimens /MN  
 and Crafted Jewelry

Clifford & Delores Barnhart, Sidney, MT--  
 Montana Agate Cabochons

Mary Beth Osborn, Mandan, ND--  
 Assorted White Crystals

Rod & Carol Hickie, Center, ND--  
 A Field Trip Collection from Western  
 North Dakota

Verl & Edna Mausehund, Linton, ND--  
 Fossils from the Linton Area

Vernie Peterson, Bismarck, ND--  
 Brazilian Slabs, Clocks; Onyx Cobslets

Duane Robey, Bismarck, ND--  
 Gold-Bearing Ore

Robert Syverson, Glendive, MT--  
 Montana Agate Jewelry

Ewald & Clara Muggli, Glen Ullin, ND--  
 African Queen Brazilian Agate Slabs  
 with Pictures

Ed & Katherine Muggli, Glen Ullin, ND--  
 Cabochon Assortment

F&F Sales & Service, Mandan, ND--  
 Teredo Worm Story

(cont.)

Exhibitors with one display, cont.

Pius Fischer, Bismarck, ND--  
Fossils and Artifacts

ND Paleontology Society, Bismarck, ND--  
Fossils from S.W. North Dakota

Central Dakota Gem & Mineral Society--  
Club Achievements

Junior Division

John Campbell, Bismarck, ND--  
Mandan & Hidatsa Indian Artifacts

Lee Allen Eckroth, Mandan, ND--  
Assorted Minerals, Fossils, and Geodes

Deanna Wandler, Bismarck, ND--  
Fossils from S.W. North Dakota

Lisa Wandler, Bismarck, ND--  
Slabs of Picture Rock

Jim Mautz, Garrison, ND--  
Assorted Crystals and Concretions

Kim Mautz, Garrison, ND--  
Fossils

Vernie Peterson II, Bismarck, ND--  
Assorted Minerals, Fossils & Artifacts

\* \* \* \* \*

SAFETY TIP FROM THE AMERICAN MEDICAL ASSOCIATION:

Don't burn the colored pages of the Sunday newspaper, especially the Sunday magazine section. These pages have a high lead content and burning colored pages of any magazine in fire places pollutes the neighborhood atmosphere with poisonous lead. And Do Not start a fire in your barbeque with colored pages. The lead will soak into the meat.

Colored inks with the highest lead content are: yellow, red, green and blue. There is little lead in black and white ink.

--Memphis Archaeological and Geological Soc. via Osage Hills Gems

\* \* \* \* \*

BRING ROCKS--

BRING CASH--

BRING USED STAMPS--

ONCE UPON A SILENT AUCTION

by Cindi Probst

Somewhere at our silent auction  
I seemed to have lost reserve and caution,  
Wrote my name on all the bid sheets,  
Went back again for many repeats,  
Attacked old ladies with my pen,  
When I was outbid again,  
Walked over babies, knocked down kids,  
While trying to protect my bids.

I hovered over a trilobite  
That would have, if it could have,  
taken flight.

I sighed as I fondled a jasper ring,  
Wondering how much it would bring.  
As I raised the bid another dollar  
I could hear a nearby lady holler,  
"I'm going to catch that nutty redhead  
And fill her pockets with a ton of lead."

So I hurried on to the next table  
Where I paused to read every label,  
And then heard the last two tables called  
As I stood there, so enthralled,  
You can just imagine my chagrin  
When I learned I'd bought what I  
brought in!

--from the Hammer, via S.I.E.S. CLUB NEWS

\* \* \* \* \*

EVERY BODY LISTEN

This is a story about four people named Every Body, Some Body, Any Body and No Body. There was an important job to be done and Every Body was asked to do it. Every Body was sure Some Body would do it. Any Body could have done it, but No Body did. Some Body got angry about that because it was Every Body's job. Every Body thought Any Body could do it, but No Body realized that Every Body wouldn't do it. It ended up that Every Body blamed Some Body when No Body did what Any Body could have done.

The moral is that participation is vital to fulfillment.

--contributed by Pius Fischer

\* \* \* \* \*

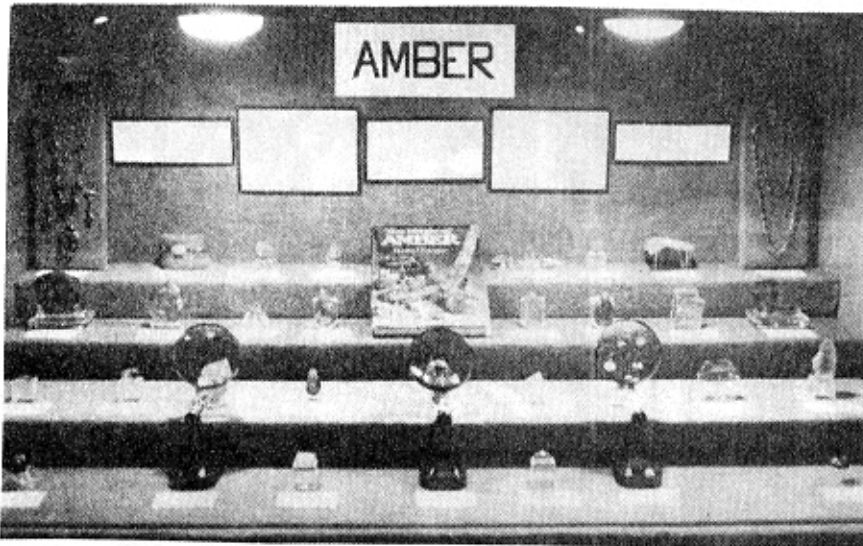
REMEMBER--THE MEETING STARTS  
AT 2:30 THIS MONTH



SCENES, 1981 SHOW



Wilma Hilgemann and Jim Mautz receiving  
"Best of Show" plaques from Earle Campbell



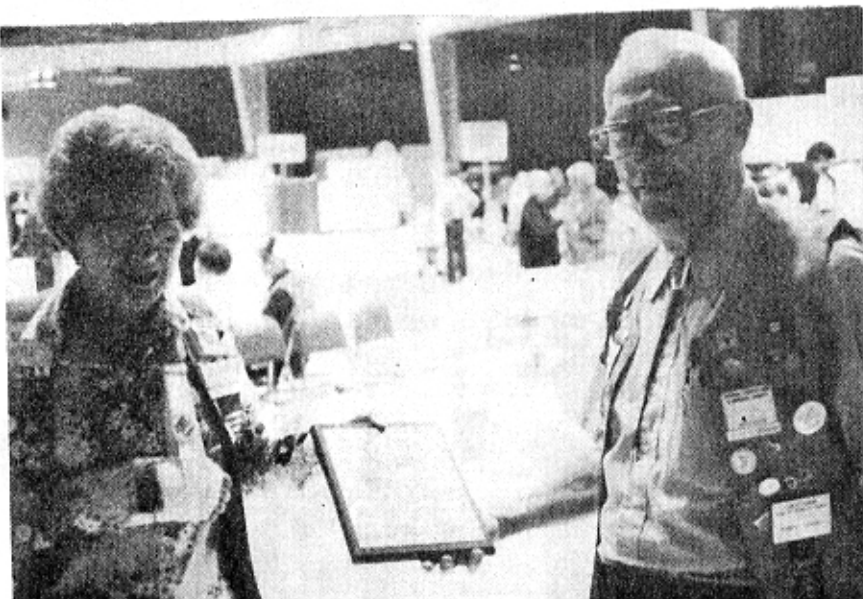
"Best of Show" Exhibit--Adult, by Wilma Hilgemann



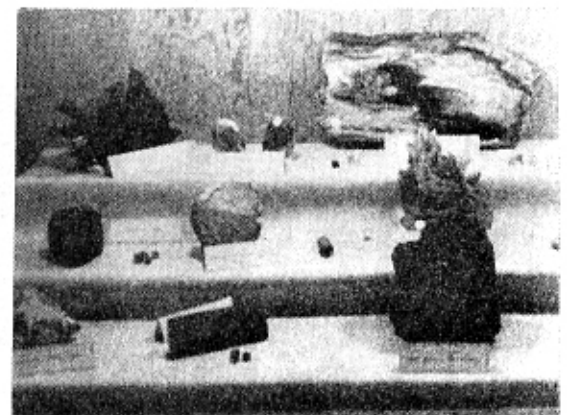
From exhibit by Vernie Peterson



Viewers



Blossomae Campbell presenting "Distinguished  
Service Award" to Bob Randall for seven years  
service as show treasurer



From exhibit by Rev. Walter Schott

September 25-26, 1981

