

DIGGIN'S FROM DAKOTA



MONTHLY PUBLICATION OF THE CENTRAL DAKOTA GEM & MINERAL SOCIETY

BISMARCK-MANDAN AND SURROUNDING AREAS

NORTH DAKOTA

DIGGIN'S FROM DAKOTA
Gen & Bill Buresh, Editors
44 Captain Marsh Drive
Mandan, ND 58554



Published by the CENTRAL DAKOTA GEM & MINERAL SOCIETY

Member

Rocky Mountain Federation of Mineralogical Societies

and

American Federation of Mineralogical Societies



- AIMS:**
1. To encourage the study of mineralogy and geology.
 2. To foster field trips for collection of minerals, gems and fossils.
 3. To improve the skills of its members in the arts of cutting, polishing and gem mounting.
 4. To provide opportunity to exchange, purchase and exhibit specimens and other material.

MEETINGS: First Sunday of each month in the Hospitality Room, Capital Electric Building on Highway 83, north of Bismarck; 7:30 P.M. from April through October and 2:30 P.M. the rest of the year. VISITORS ARE ALWAYS WELCOME.

DUES: \$5.00 per family per year.

OFFICERS AND COMMITTEE CHAIRPERSONS:

President	Harold Brady	1401 Sunny Road	Mandan	663-3904
Vice President	Mary Peth Osborn	310 - 12th Ave. NW	Mandan	663-1056
Secretary	Ted Giese	Route 1	New Salem	843-7005
Treasurer	Carol Hickie		Center	794-3342
Bulletin Editors	Genevieve L. & William A. Buresh	1527 N. 19th St.	Bismarck	223-0611
Publicity	Blossomae Campbell	1134 N. 28th St.	Bismarck	255-3658
Parliamentarian	Genevieve L. Buresh	1527 N. 19th St.	Bismarck	223-0611
Program	Stanley Fairaizl	205 - 6th Ave. NW	Mandan	663-9712
Librarian	Fred Springer	1119 S. 9th St.	Bismarck	255-4232
Field Trip	Rodney Hickie		Center	794-3342
Annual Show	Earle Campbell & Bob Randall	1134 N. 28th St. 928 N. 16th St.	Bismarck Bismarck	255-3658 233-1625
Pebble Pup Leader	Pat Brady	1401 Sunny Road	Mandan	663-3904
Historian	Emma Brady	1401 Sunny Road	Mandan	663-3904
Hospitality	Emma Fischer	501 S. 13th St.	Bismarck	223-4362
Membership & Subscrip.	John Dosch	2118 Marian Dr.	Bismarck	255-1924
Federation Rep.	Ida Mae Ramberg	1325 N. 15th St.	Bismarck	223-6296
Refreshments	Verna Giese	Route 1	New Salem	843-7005

Subscription rates for non-members are \$3.00 per year.

All members are encouraged to submit articles, etc., for publication during the year. All material for the bulletin should be received by the editor by the 10th of each month. Advertizing in the bulletin by members will also be accepted.

Other editors may reprint articles from this bulletin. A credit line would be appreciated.



North Dakota's Annual GEM AND MINERAL SHOW

Mandan Community Center

September 26 - 27, 1980

D I G G I N ' S F R O M D A K O T A

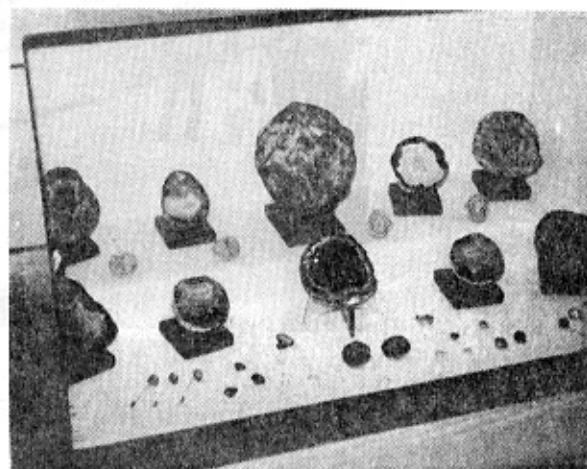
Volume 14, No. 10

October, 1979

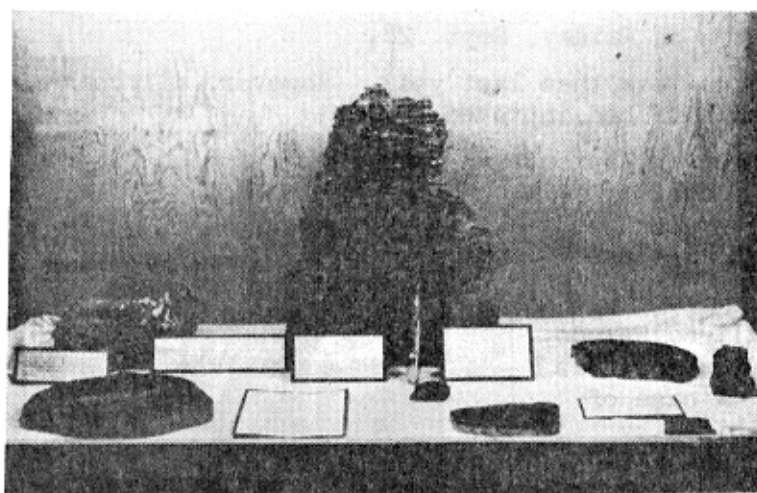
1979 SHOW HIGHLIGHTS



Ewald and Clara Muggli Receiving
"Best-of-Show, 1979" Award from
Earle Campbell, Show Chairman



"Best-of-Show, 1979"



"Best Educational, 1979"



Stanley Fairaizl Receiving
"Best Educational, 1979" Award from
Earle Campbell, Show Chairman

SHOW HIGHLIGHTS, 1979, cont.

OVERALL VIEW, EXHIBIT AREA, 1979

Approximately twelve hundred people registered for admission to this year's annual show, according to Bob Randall, Show Treasurer.

Seventy-two visitors from out-of-state were registered from sixteen states. South Dakota led the list of out-of-state admissions, with thirty-one registrants.

Sixty-five cities or towns in North Dakota were represented besides the Bismarck-Mandan area. Dickinson led the in-state list, followed by Linton, New Salem, and Minot.

New Zealand was the only foreign country represented this year.

Five area school groups viewed the show on Friday, Sept. 28.

Forty-six exhibits were on display--ten less than last year. However, all comments indicated that the quality of the exhibits had improved.

Ewald and Clara Muggli, Glen Ullin, were recipients of the "Best-of-Show, 1979" award for their exhibit on "Geodes"; Honorable Mention was awarded to Bob Randall, Bismarck, for his case of "Fluorescent Minerals."

A case depicting "Formation of Fossilized Teredo Wood" displayed by Stanley Fairaizl, Mandan, was judged as "Best Educational, 1979." A case of "Amber" (specimens and jewelry) exhibited by Wilma Hilgemann, Leola, SD, received Honorable Mention in the educational category.

(cont. on page 4)



Don Campbell Presenting Distinguished Service Award to Earle Campbell, Shown with His Wife, Blossomae

NEXT MEETING: November 4, 1979, 2:30 p.m. (Beginners' Class, 1:30 p.m.)

PROGRAM: Silent Auction---Bring some good usable material for this event

LUNCH COMMITTEE: Rod Hickle, Orma Swanick, and Viola Anderson

* * * * *

FIELD TRIP, by Rod Hickle

WHERE? McClusky Canal

WHEN? Sunday, Oct. 21, 1979

TIME? 11:00 a.m., Central Daylight Time

FOR? Selenite Crystals and Fun

The collecting site is $1\frac{1}{2}$ miles west of McClusky, ND, where Highway 200 crosses the canal. We will meet there at the site.

The best route to the site from Bismarck is Highway 83 to the junction one-fourth mile north of Wilton. From there take Highway 41 to Mercer and then east on Highway 200 for eleven or twelve miles to the canal..

* * * * *

AT THE LAST MEETING--October 7

Forty-two members and four children were present at the October meeting.

Rod Hickle, Field Trip Chairman, reported that he was trying to schedule a field trip to the McClusky Canal for October 21. He will publish the schedule in the next "Diggin's."

Show Chairman Earle Campbell reported that this year's Annual Show was again a grand success, both esthetically and financially. Next year's show dates have been set for Friday and Saturday, Sept. 26-27, 1980.

(cont. on page 4)

CALENDAR OF EVENTS

Oct. 21 Club Field Trip to McClusky Canal (Details above)

Nov. 4 Bismarck, ND--2:30 p.m. Regular Meeting, Central Dakota Gem & Mineral Society, Capital Electric Bldg., Highway 83 North of City

Sept. 26-27 1980 HANDBAN, ND--NORTH DAKOTA'S SIXTH ANNUAL SHOW, sponsored by
CENTRAL DAKOTA GEM & MINERAL SOCIETY, at
HANDBAN COMMUNITY CENTER

* * * * *

Forget your worries. Tomorrow there will be new ones to take their place.

--From a Fortune Cookie via Golden Spike News

AT THE LAST MEETING, cont.

Bob Randall, Show Treasurer, reported that although some bills are still outstanding, the proceeds from the show should be approximately two hundred dollars; that the receipts for the club's share of the silent auction were for \$143.90, which has been dedicated this year to the Rocky Mountain Federation

Scholarship Fund; and that although some of the dealers did not fare as well as in other years when the show was held on Saturday and Sunday, other dealers reported considerably better sales this year on a Friday-Saturday schedule.

Earle Campbell thanked everyone for the excellent cooperation during his five-year tenure as show chairman and expressed the hope that the same cooperation would be extended to the new chairman.

President Marold Brady announced the appointment of Don Campbell as Show Chairman for 1980.

Earle Campbell displayed posters advertising two different activities with auction sales scheduled on Sundays. After some discussion, it was decided that no action would be taken on this matter at this time.

The lack of a permanent address for the Society was discussed. Earle Campbell reported receiving a communication from the Rocky Mountain Federation stating that their mail directed to the Society was being returned because of the lack of a specific address for the Society. After discussion, President Brady directed Earle Campbell to pursue the matter of obtaining a post office box for a permanent address for the Society.

A letter from Dixie Lee Alf, Chairman of the Scholarship Fund for the Rocky Mountain Federation, was read, acknowledging with thanks the receipt of a fifty dollar contribution to the Fund from this Society.

A Nominating Committee consisting of Walter Buck, Pius Fischer, and Nettie Nelson was appointed by President Brady.

The door prize, a blue hemimorphite brooch donated by Don Campbell, was won by Sue Randall.

Emma Fischer, Hospitality Chairman, presented to Verna Giese a Victoriastone brooch donated to the "Hospital Bank" by Don Campbell, as she did not learn of Verna's stay in the hospital in time to deliver it to her there.

For the program a slide show prepared by the Society, "Gems and Minerals of North Dakota," was presented by Bill Buresh, with Gen Buresh reading the script (by flashlight!).

Lunch was served by Ruby Jensen, Emma Richardson, and Emma Brady.

* * * * *

SHOW HIGHLIGHTS, cont.

Judges for this year's show were Malcolm Ritter, staff writer for The Bismarck Tribune; Ann Putz, local music instructor; Chuck Gress, consulting pharmacist for Medical Services, Social Service Board of North Dakota; and Lorraine Gress, Accredited Record Technician for Medical Records, St. Alexious Hospital.

Demonstrations during the show included "Trim Saw Operation" by a junior club member, John Campbell; "Faceting" by club member Carl Ellison; "Opal Cutting and Polishing," by Clayton Doan of Doan's Opal & Gem shop; and "Cabochon Cutting and Polishing" by Roy Isaksen of P&F Sales & Service.

The "Touch and See" table again attracted much attention. The "Silent Auction" was a great success, judging from the proceeds. The "Swappers" were somewhat few in number this year, but the "Give-Away" box was empty at closing time.

Blossomae Campbell and Bob Randall, co-operators of the Fluorescent Demonstrations, reported that their sessions were well attended.

The Slide Lecture Series were consistently attended by a few individuals, some of whom were seen at every performance, according to Rod Hickie and Larry Strand, who were in charge of that department.

(cont. on page 5)

SHOW HIGHLIGHTS, cont.

Rod and Larry wish to extend a special thanks to Art Ray of Ray's Camera and Model Shop of Bismarck for the use of a projector during the show. Central Dakota Gem and Mineral Society hosted a breakfast for dealers on Saturday morning, with eighteen club members also in attendance. During the short program, it was announced by Earle Campbell, 1979 Show Chairman, that the dates for next year's show will be Sept. 26-27, 1980. Earle also informed the dealers that this was his last year as show chairman. President Harold Brady announced that Don Campbell had been appointed as Show Chairman for 1980.

At the close of the breakfast, a "Distinguished Service" plaque was presented to Earle Campbell for his five years of service as show chairman. The presentation was made by Don Campbell, Chairman, Distinguished Service Award Committee.

Financially, the 1979 show appears to be in the black, according to a preliminary report. The final accounting should be available by the next club meeting.

* * * * *

THIS-N-THAT

BLOSSOMAE CAMPBELL will have a mineral exhibit in the display case at the Veterans Memorial Library, 609 East Thayer Ave., Bismarck, starting Nov. 1.

VINA ANDERSON has been ill since the last publication of the "Diggin's." She was missed during the show and at the last meeting.

* * * * *

COPY NEEDED

The Editors need the help of members in providing news and information about your activities, travels, accomplishments. If you're ill or hospitalized, have someone call the Hospitality Chairman, Emma Fischer, and she informs the editors.

All contributions are appreciated. We can't tell your story if you don't tell us.

NEW MEMBERS

Listed below are new members who joined the Society while visiting the show:

Tony & Esther Konig, 613 E. Towne,
Glendive, MT 59330
DeWayne & Karen Martin, 2104 - 7th Ave.
NW., Minot, ND 58701 852-4726
Robert & Carol Olheiser, 1210 Albany Dr.,
Bismarck, ND 58501 258-7832
Norman C. & Betty Mautz, R.R.1,
Garrison, ND 58540 337-5775

Reinstated:

Kent Higgins, 1009 N. 16th St.,
Bismarck, ND 58501 222-8580

* * * * *

SHOW EXHIBITS--FINALE

I wish to thank all the exhibitors at the 1979 show for their effort in preparing their cases. Although fewer in number this year, the quality of the exhibits was very good.

I would especially like to thank those who displayed for the first time this year. Their cases all told a story--each in its own way.

I hope that even more members will get their feet wet next year.

Thanks again for your cooperation.

Bill Buresh,
1979 Show Exhibits Chairman

* * * * *

COOK'S CORNER: RHUBARB DESSERT, by Ruby Dallman

1 c flour	}	Mix like pie crust and bake until light brown.
2 T sugar		
$\frac{1}{2}$ c butter		
6 egg yolks	}	Mix. Sprinkle with cinnamon and a pinch of nutmeg. Put on baked crust and bake 45 min. or until set.
$\frac{2}{3}$ c cream		
$2\frac{1}{2}$ c sugar		
4 T flour		
$4\frac{1}{2}$ c rhubarb	}	Beat: 6 egg whites } 6 T water } Put on dessert 6 T sugar } and bake until 1 t vanilla } done.

(Printed by request of
members)

UNIVERSAL ROCKHOUND EMBLEM

The lapidary hobby is constantly benefiting from the new ideas of imaginative enthusiasts. Congratulations must go to the people involved in the creation of the Universal Rockhound Emblem. This is a symbol which can be used by every rockhound, lapidary club member, or free-lance individual collector. It lets everyone know you are a rockhound interested in swapping or discussing some branch of the lapidary art or allied interests.

The Universal Rockhound Emblem is a stylized design of a rock hammer in gold on a background of lapis lazuli blue. "The gold of the earth that so few of us can find and the blue of the sky that everyone can see and enjoy."

It is the idea of Mr. Bill Thompson, of the Murwillumbah Gem & Mineral and Geology Club, New South Wales, Australia, who thought that there should be a universal emblem to recognize a rockhound anywhere, any time, for mutual benefit.

The design is Mrs. Jo Robinson's of the Lismore Gem & Mineral Society, New South Wales, Australia. As a teacher, she knows the value of a simple, uncluttered symbol for instant recognition in any part of the world. This emblem can be any size, easy to make and because of its simple design, can be readily recognized by everyone from a distance.

It is not intended to replace club or district badges (club logos); It complements them by saying, "I am a rockhound." No words or mottoes are necessary. In a short while everyone, rockhound or not, will recognize the emblem, thus widening your circle of friends and helping learn of new locations and ideas.

Anyone interested in obtaining a pin or decal may contact the following person:

Sacramento Mineral Society
Mrs. Eva Rosin
4270 Silver Crest Ave.
Sacramento, California 95821

The cost of the pin is \$1.00, and the decal is \$0.50 each plus postage. The Sacramento Mineral Society is the only

place that you can get this logo pin and decal in the United States. They received special permission from the Far North Coast Regional Council of Lapidary Clubs, New South Wales, Australia to help promote its use. --Paul Morris, Executive Secretary, Fluorescent Mineral Society---from "U.V. WAVES", July-Aug., 1979, pub. by Fluorescent Mineral Soc. (Contributed by Blossomae Campbell)

* * * * *

MINERAL SPECIMENS WANTED

John Campbell, junior member, would like to complete the map he exhibited at the Gem and Mineral show this year. He needs rocks, minerals, or fossils from the following states: Connecticut, Delaware, Kentucky, Maine, Massachusetts, Mississippi, New Hampshire, North Carolina, Rhode Island, Tennessee, and West Virginia.

The specimens could be one-half inch to one inch in size, not necessarily of the best quality.

* * * * *

TRAVELING TO OREGON,

by Emma Fischer

Fius and I left Bismarck on Sept. 26 and arrived in Portland, Ore., at 12:30 on Friday. We visited Norma and Judy Adams and then drove to Newberg, Ore., to visit my sister and brother-in-law. On Saturday we picked 350 pounds of hazelnuts and 100 pounds of walnuts. We also picked grapes at 15¢ per pound and bought beautiful delicious apples at 20 ¢ per pound.

We saw several rock shops along the way and also saw a forest fire in progress.

The relatives showed us a really good time. We ate out all the time so we had more time to see the country. The orchards were just beautiful at this time of year.

We left there on Tuesday morning and arrived home late Wednesday night.

* * * * *